

**LanguageCert
Preliminary A1
Entry Level 1
International ESOL (Speaking)
Practice Paper 2**

Interlocutor's instructions

CHECK THAT THE RECORDER IS ON AND WORKING

Test time: 6 minutes

I = Interlocutor C = Candidate

PART 1 (1 minute 30 seconds)

I: LanguageCert International ESOL, Speaking, Preliminary level, *(give today's date)*.

(Give candidate's full name.) Test begins.

Hello. My name's *(give full name)*. Can you spell your family name for me, please?

C: *(Spells family name.)*

I: Thank you. Where are you from?

C: *(Responds.)*

I: Thank you. Now, in the first part of the test I'm going to ask you some questions about yourself. **(Choose up to five questions from the list as time allows.)**

Questions

- Have you got any brothers or sisters?
- Who's your best friend?
- Where do you go on holiday?
- When's your birthday?
- What music do you like?
- What do you do at the weekend?
- What have you got in your bedroom?
- How big is your house or flat?
- What's your job?
- What subjects do you like at school?

C: *(Responds.)*

I: *(Interlocutor responds and/or comments briefly.)*

I: Thank you.

PART 2 (1 minute)

I: Now, Part Two. I'm going to read some situations. I want you to start or answer. First situation (*choose one situation from A*).

A

- We are friends. I start.
Have you got a mobile phone?
- We are friends. We're at my house. I start.
Do you want something to drink?
- I'm in your town. We meet in the street. I start.
Excuse me, where's the cinema?
- I'm a doctor. You don't feel well. I start.
What's wrong?

C: (*Responds.*)

I: (*Role-play the situation with the candidate – approximately two turns each.*)

I: Second situation (*choose one situation from B*).

B

- We are new students. You want to know where the teacher's office is. You start.
- We are friends. I meet you and your sister in the street. You start.
- I'm your boss. You are late for work. You start.
- We're in the same class. I have problems with my homework. You start.

C: (*Initiates.*)

I: (*Role-play the situation with the candidate – approximately two turns each.*)

I: (*Role-play a third situation from A or B if time allows.*)

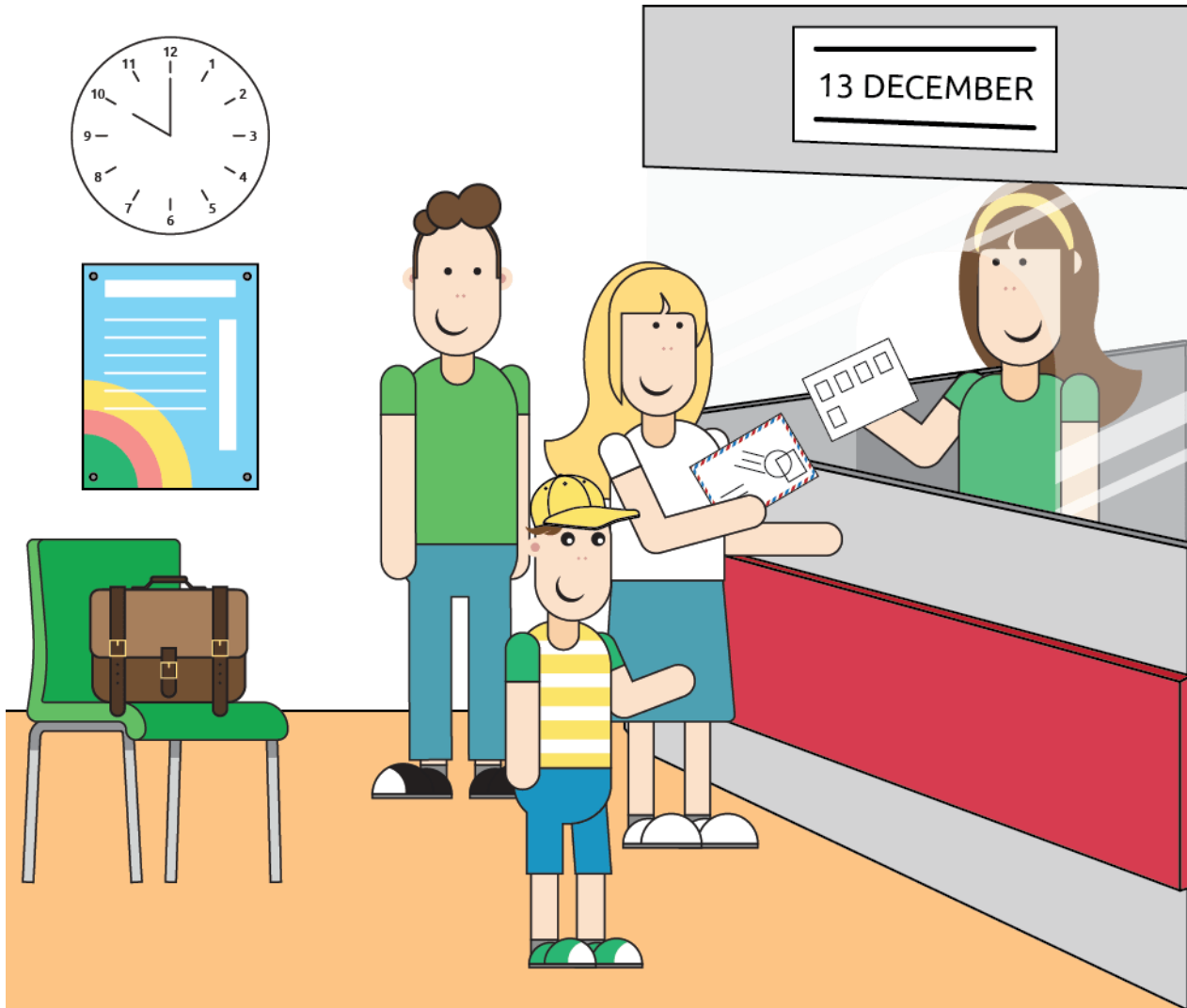
I: Thank you.

This page is intentionally left blank

PART 3 (1 minute 30 seconds)

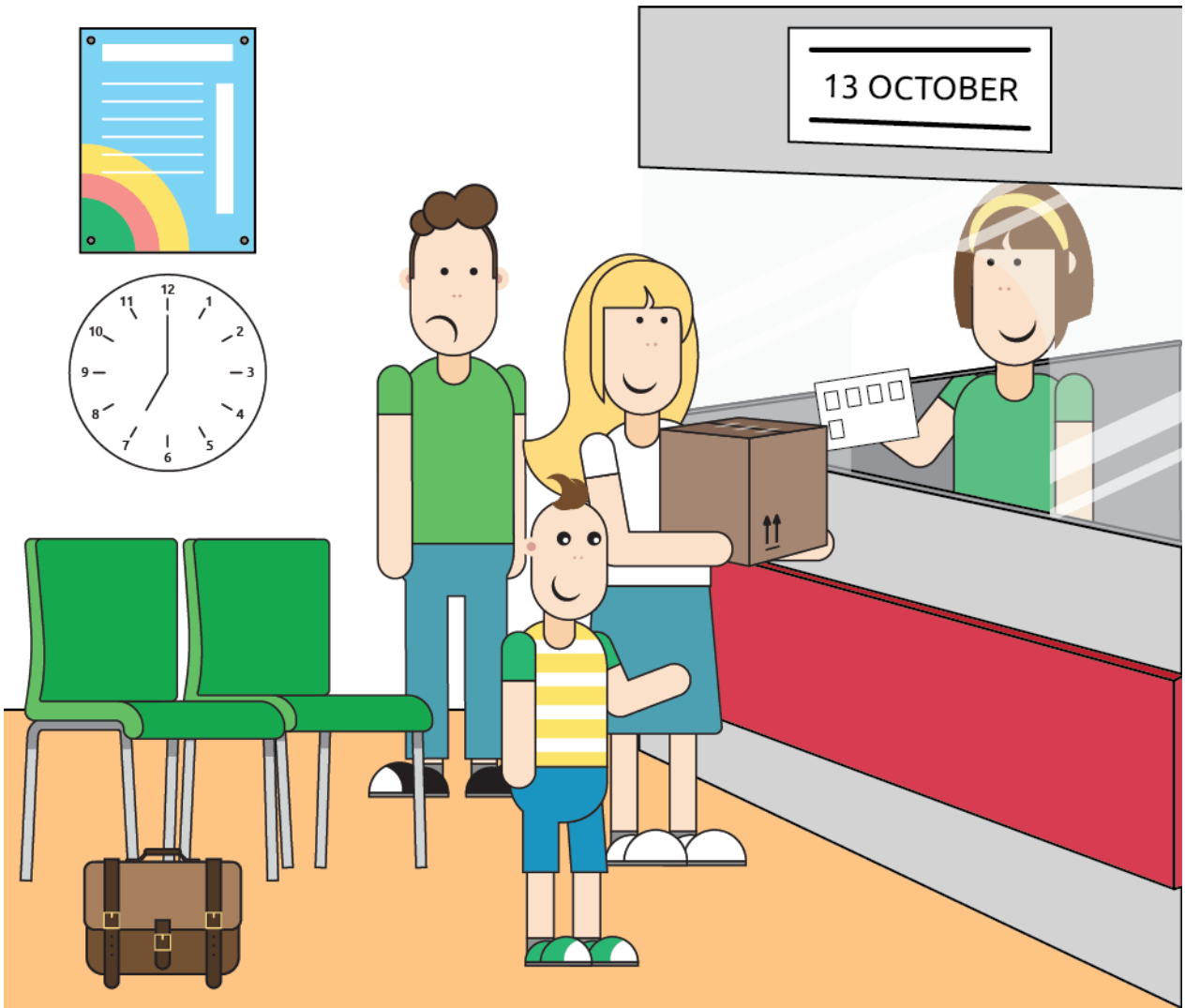
- I: Now, Part Three. Here's a picture of a post office. *(Hand over candidate's copy of the task.)*
I also have a picture of a post office. Some things are different. You and I must find the differences.
All right? I start.

Interlocutor's Task Sheet



- I: Thank you. *(Retrieve candidate's task sheet.)*

Candidate's Task Sheet (Interlocutor's copy)



PART 4 (2 minutes including follow-up questions)

I: In Part Four you are going to talk on your own for half a minute. Your topic is (*choose topic for candidate*).

Topics

- A What you do on Mondays**
- B The food you like**
- C The weather in your country**

I: (*Hand over piece of paper and pen/pencil.*) You now have thirty seconds to write some notes to help you. So your topic is (*repeat topic*). (*Withdraw eye contact for thirty seconds. Leave recorder running.*)

I: (*Candidate's name*), please start.

C: (*Talks.*)

I: (*When candidate has talked for a maximum of half a minute, say, 'Thank you', and then ask some follow-up questions.*)

Follow-up questions

What you do on Mondays

- What's your favourite day of the week?
- When do you usually meet your friends?
- What do you do after school/work?
- What do you do at the weekend?

The food you like

- Where do you shop for food?
- When do you go to a restaurant?
- Who cooks in your family?
- Who do you usually eat with?

The weather in your country

- What's your favourite weather?
- What do you do when it rains?
- What's the weather like today?
- Where do you go when the weather is hot?

I: Thank you. That is the end of the test. (*Give candidate's name.*) End of test.

Candidate's Task Sheet for Part Three (Candidate's copy)

